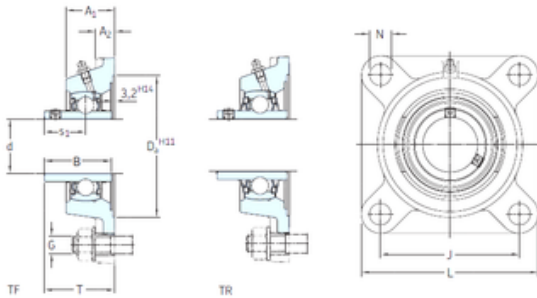




PRECISION BEARING CORP

SKF FYJ 2. TF bearing units

Bearing No. FYJ 2. TF



FYJ 2. TF Bearing 2D drawings and 3D CAD models

Bore Diameter	50,8 mm
Width	55,6 mm
d	50,8 mm
s1	33,4 mm
A1	43 mm
B	55,6 mm
G	16 mm
J	130 mm
L	162 mm
T	58,4 mm
A2	20 mm
Weight	3,6 Kg
Basic dynamic load rating (C)	43,6 kN
Basic static load rating (C0)	29 kN
Fatigue load limit (Pu)	1,25
Category	Bearings
Inventory	0.0
Manufacturer Name	SKF
Minimum Buy Quantity	N/A
Weight / Kilogram	0
Product Group	M06110
Housing material	Cast iron
D _a	150.8 mm
D _{b1}	130 mm
D _{b2}	130 mm
A	43 mm



PRECISION BEARING CORP

A ₁	17 mm
A ₃	3.2 mm
N	19 mm
s ₁	33.4 mm
R _G	1/4-28 UNF
R ₁	25 mm
D _N	6.5 mm
SW _N	7 mm
G _N	1/4-28 SAE-LT
J ₆	148 mm
J ₇	45 mm
N ₄	4 mm
Basic dynamic load rating C	43.6 kN
Basic static load rating C ₀	29 kN
Fatigue load limit P _u	1.25 kN
Limiting speed	3600 r/min
Mass bearing unit	3.25 kg
Thread grub screw G ₂	3/8-24 UNF
Hexagonal key size for grub screw N	4.763 mm
Recommended tightening torque for grub screw	16.5 N · m
Recommended diameter for attachment bolts, mm G	16 mm
Recommended diameter for attachment bolts, inch G	0.625 in